

MATRIX MULTI BOUNDARY BOX

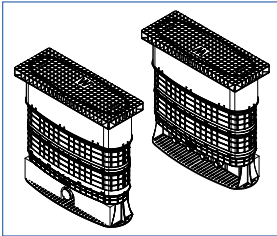
INSTALLATION INSTRUCTIONS



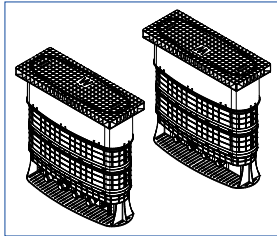
MATRIX MULTI BOX

Atplas boundary boxes are designed to comply with the relevant aspects of BS 5834 parts 1 and 2. This Matrix Multi Box is fitted with a Grade C surface box. They are designed for conveyance of cold potable water only. No warranty is given nor liability accepted by Atplas for use for any other purpose, for failure to comply with these installation instructions, or for alterations made to the boxes. Atplas recommends the use of suitable protective clothing such as gloves, overalls, eye protection and safety footwear during installation

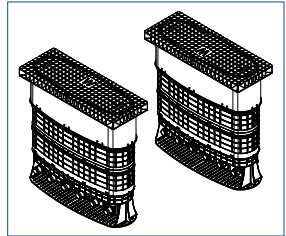
Ensure you have selected the correct box for the installation:



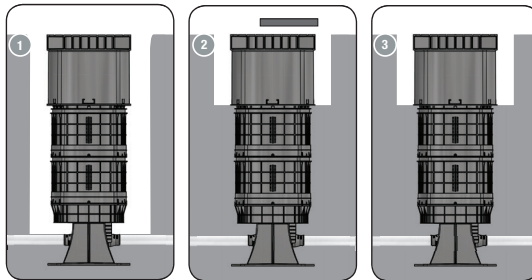
Single inlet, 4 outlet pushfit
Single inlet, 6 outlet pushfit



4 inlet, 4 outlet pushfit

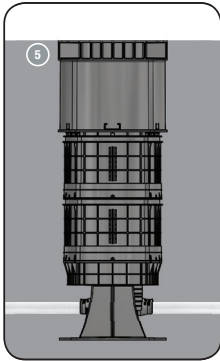


6 inlet, 6 outlet pushfit



1. The service should be flushed fully to avoid any debris entering the system before connecting the service pipes. Place the complete unit in position on firm even ground and connect the inlet and outlet pipe work (Pushfit inlet: Insert the liner into the end of the pipe. Push pipe fully into the fitting until a hard stop is reached. BSP Female inlet: Use suitable female adaptor.). Avoid excess stress being placed on the connections. If necessary use additional fittings to align the pipes. The direction of the flow is indicated by an arrow on the base.
2. Open the surface box lid to allow the telescopic chamber to extend and adjust the box height to the approximate height of the final reinstatement level. Do not remove the support bars.
3. Close the lid and backfill with granular material in well compacted 100mm layers to the bottom of the surface box frame.

INSTALLATION / OPERATION / MAINTENANCE



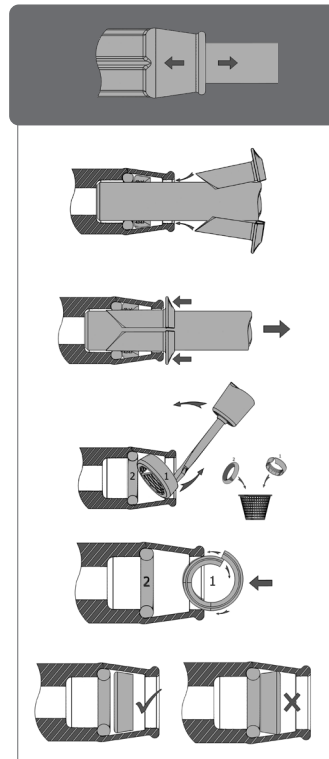
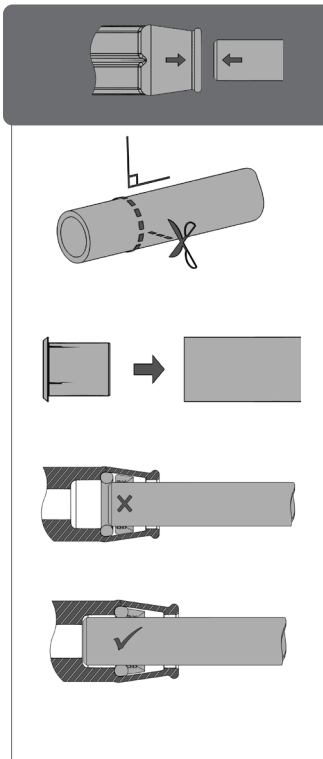
With pipe connected and ground completely surrounding box

5. Prise lid to break the seal. Using the final adjustment available in the surface box frame, ensure the frame and cover meet the final level requirement. The surface box should be compacted down with the surrounding material, helping to improve reinstatement quality. Close the lid and continue to backfill up to a level below the top of the surface box that allows for the top surface material thickness, compacting the backfill. Finish to the final surface level.

Ensure the surface box flange is supported by well compacted backfill in order to prevent lid settlement. Ensure that correct and accurate level and inclination are achieved to suit surrounding area to avoid potential trip hazards.

Note: For compaction and final reinstatement of the surface box, we recommend the use of contractors' rammers or similar hand tool.

TALBOT PUSHFIT



Atlantic Plastics Ltd

Coytrahene Close
Brackla Industrial Estate
Bridgend CF31 2AX
United Kingdom

Tel +44 (0)845 077 9797
www.atplas.co.uk
Email enquiries@atplas.co.uk



Note: Specifications may be changed without notification at any time.
© 2024 Atlantic Plastics Ltd
IOM_MBX120124_MATRIX MULTI BOX_EN Ref: TEBC404 iss 1