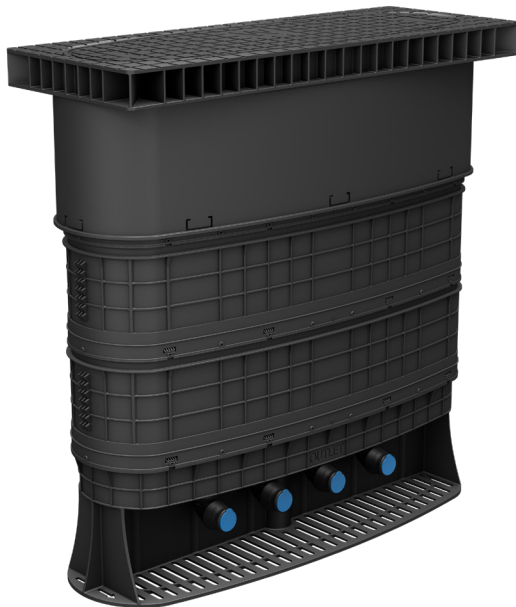


## MATRIX MULTI 4 IN 4 OUT BELOW GROUND BOUNDARY BOX SEALED TELESCOPIC PLASTIC RAISED MANIFOLD

25/32mm PE Connections 16 Bar pressure rating Grade C load bearing 5t



PRODUCT CODE	INLET	OUTLET	SHUT OFF	HEIGHT
1954-125-55-112	4 x 25mm PF	4 x 25mm PF	¼ Turn with Matrix long key	590-720mm
1954-132-55-112	4 x 32mm PF	4 x 32mm PF	¼ Turn with Matrix long key	590-720mm

\* Lid marked 'W' and incorporates metal detector plate



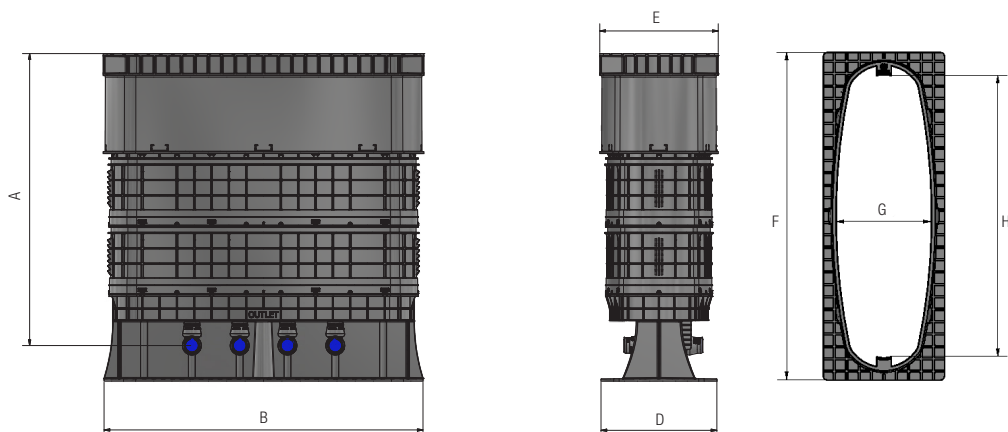
**Matrix Multi Below Ground Boundary Box**

## MATRIX MULTI 4 IN 4 OUT BELOW GROUND BOUNDARY BOX

16 Bar pressure rating Grade C load bearing 5t

Feature	Specification
Compliance to BS 5834-1:2017	Compliant to relevant aspects of BS 5834-1:2017
Frame and Cover	Universal 8° tilt. Pluck lid with two lifting handles. Nylon designed for 5t loading, Grade C load bearing according to BS 5834-2:2011
Guard Tube Material	Recycled Polypropylene (black)
Guard Tube Profile	Stadium profile with 725mm x 246mm opening
Height Adjust (apr)	See below table (125mm final height adjustment in surface box)
Frost Protection	As standard in accordance with BS 5834-1:2017
Water Tightness	Sealed Class 1 or Unsealed Class 2 (BS 5834-1:2017)
Shut Off Device	¼ turn spherical valve supplied with Matrix long key 8292
Check Valve	Check valve in accordance with BS EN 13959: 2004 Family E Type B WIS 5-11-01 (double check valve on request)
Manifold	Raised style in Plastic (Acetyl Co-Polymer)
Meter Connection	4 x 1½" BSP concentric meters to BS EN ISO 4064; Q3 4.0 (Qn 2.5)
Head Loss	< 3 meters @ 25 l/min flow rate with meter and single check valve
Inlet	4 x 25mm or 4 x 32mm Pushfit for PE pipe in accordance with WIS 4-32-11
Outlet	4 x 25mm or 4 x 32mm Pushfit for PE pipe in accordance with WIS 4-32-11
Blank Plugs	Full Flow (standard), Trickle Flow (optional), No Flow (optional). 27/28 mm tapered A/F hexagonal upstand
Product Weight (apr)	22.4 kg (590-720mm), 25.15 kg (770-900mm)
Pallet Quantity	4 per pallet
Tools	BOP77011-28: 28mm socket for meter plug & NRV BOP77008: Short T bar 400mm long BOP77009: T bar extension 500mm long

The technical data and performance may be modified without prior notice depending on the technical advances.



Box	A (min/max)	B	C	D	E	F	G
Matrix Multi 4 in 4 out	590-720mm / 770-900mm	841mm	305mm	312mm	845mm	246mm	725mm